

MultiRerounder Clamp (32)



Pipe Range

20 , 32 mm
Optional 16 mm
Optional 25 mm
Optional ¾ inch

Pipe Material

PE80, PE100, PP

Weight

1 ½ kg

Size

23 x 13 X 7 cm

Operating Temperature

-15 °C to +50 °C



ADVANCE WELDING

Unit B Orchard Works
Spenneth Street
Heckmondwike
West Yorkshire
WF16 0NQ
United Kingdom

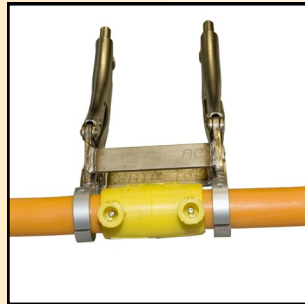
Tel +44 870 609 3257

Fax +44 870 752 6139

sales@advancewelding.co.uk

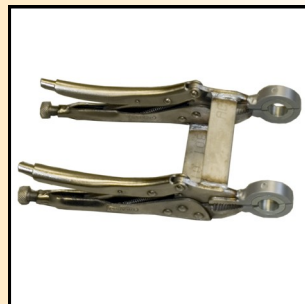
www.ElectrofusionWelding.com

This MultiRerounder Clamp has been designed to re-round, align and restrain pipes while the electrofusion process is being carried out. It will hold pipes from 16 mm diameter to 32 mm diameter as straight couplers or reducers. It has been designed specifically for Service Pipe installation, and will fit comfortably on restricted space tapping saddles. When size and weight are important, this multi-purpose tool is perfect.



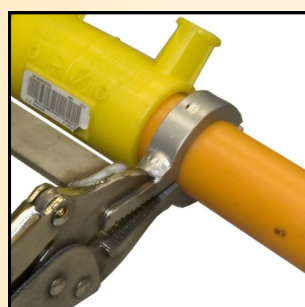
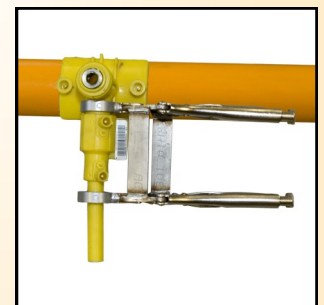
The tool has two strong steel rings that clamp and restrain the pipes. These are mounted on quick release clamps that are connected with a rigid steel plate to ensure proper alignment. The clamp is designed to be very small making it ideal for restricted access applications. In addition to restraining the pipe, these strong rings will reround oval pipes.

The clamping rings are 32mm diameter to hold the most common size of service pipe. These rings are magnetized to allow different size metal liners to quickly lock in and out of the ring. This makes holding reducers or different size couplers very easy.



Each side of the tool uses a quick-release Mole Grip type clamp. This allows the tool to be quickly and easily attached to the pipe. A quick lock down on each side and its on. This design also makes rerounding squeezed pipes possible as the clamp grip can be loosened to allow it over the squeezed area.

This tool is ideal for attaching services to tapping saddles. Many saddles have short spigots and low stack height. This makes clamping the coupler/reducer very difficult. This tool has a very narrow clamp ring width giving access easy.



Due to the rigid design of the tool, and the strong clamp grip, this tool is ideal for clamping coiled pipes. The tool will easily hold the pipes in alignment and restrict movement during the weld.